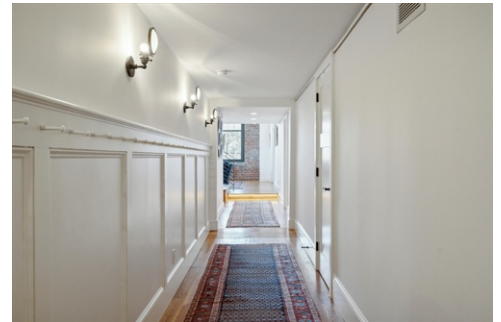


## Exclusive 3-Story Boutique Elevator Building in the Heart of Center City!



\$ 1,999,000



700 S 10th St #3DE, Philadelphia, PA 19147

- » Beds: 4 | Baths: 5 Full
- » MLS #: PAPH2331710
- » Single Family | Lot: 3,607 ft<sup>2</sup>
- » Urban luxury living in a bi-level 4-bed, 5-bath loft with sweeping city skyline views
- » Expansive living, dining, and kitchen areas with exposed brick and ductwork
- » More Info: [700S10thSt3DE.com](http://700S10thSt3DE.com)



Eric Fox  
(267) 625-4504 (Eric Cell)  
[eric@efoxhomes.com](mailto:eric@efoxhomes.com)  
<http://www.efoxhomes.com>



Compass  
1430 Walnut Street  
3rd Floor  
Philadelphia, PA 19102  
(267) 435-8015

Experience the ultimate in urban luxury living in this bi-level 4-bedroom, 5-bath loft with a 2-car garage in the heart of Center City! With 14-foot ceilings and sweeping city skyline views this extraordinary residence is a must-see. Embrace serene "penthouse" living in this exclusive 3-story boutique elevator building which boasts just (12) units for an intimate and refined urban lifestyle. As you step in, you'll be welcomed by custom hallway moldings and oak hardwood flooring which extends throughout. The expansive "L" shaped living room, dining room and kitchen captivates you with exposed brick and ductwork and eight 10ft x 9ft windows. Culinary enthusiasts will appreciate the gourmet kitchen equipped with Gaggenau, Thermador, Sub-Zero and Bosch appliances, Boland Woodworking custom cabinetry, double oversized Soapstone stone islands and a Waterstone Gantry Hook faucet. A custom ladder from Putnam Rolling Ladder Co. seamlessly blends functionality and style in this impressive space. Entertain effortlessly in the dining and living rooms adorned with Antique Holophane light fixtures and Hudson Valley Lighting Chambers Pendant Chandeliers. A spacious family room is located just off the main entertaining area and features a wall of custom millwork with built-in storage and shelving. The cedar plank ceiling and original timber beams add a touch of rustic charm to the contemporary design. Luxury extends to the 4 private bedroom spaces as well. The primary suite is spacious with a custom Laren walk-in closet from the Container Store and the bath features Century Bathworks

